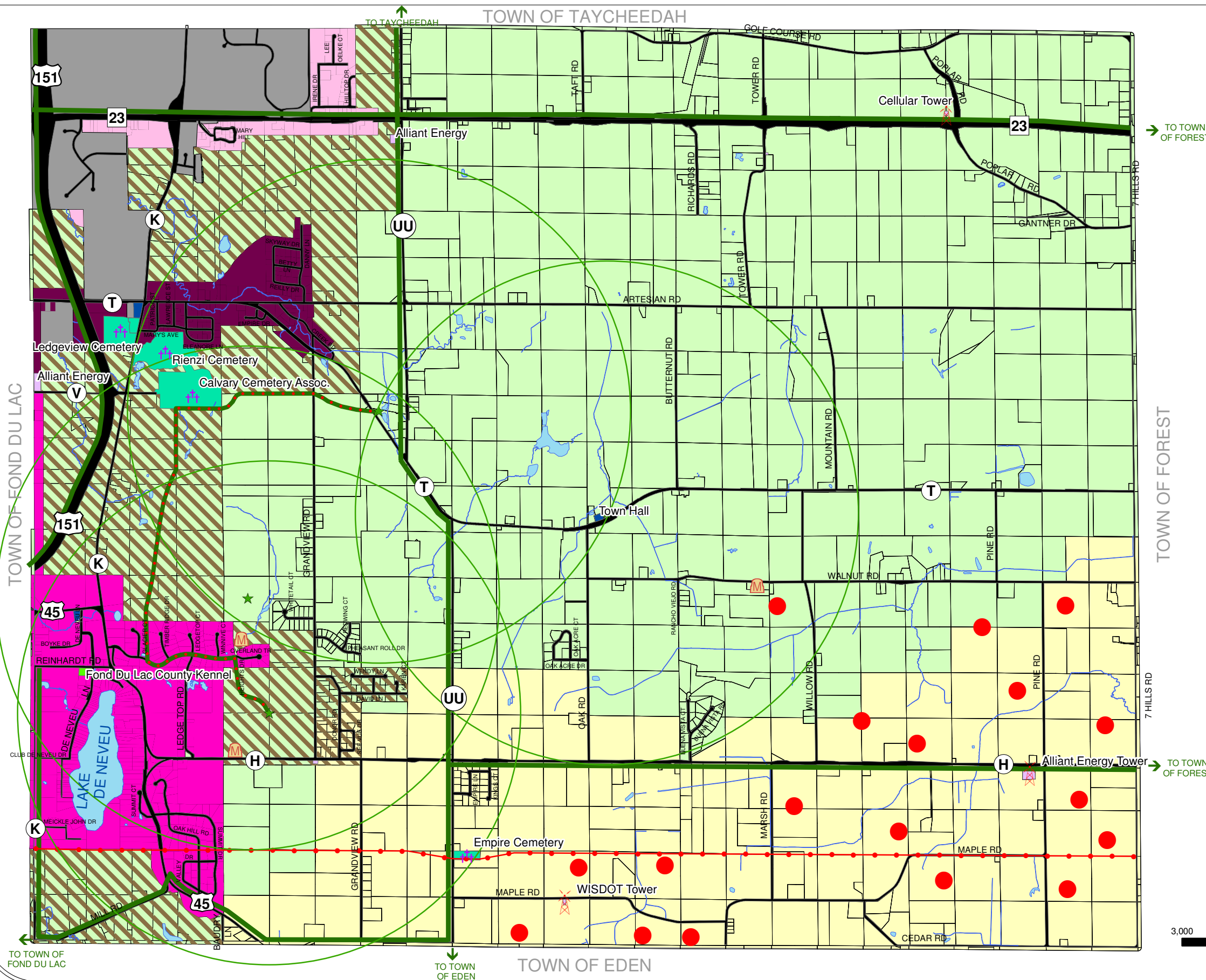


UTILITIES & COMMUNITY FACILITIES

TOWN OF EMPIRE



Legend

- CAMPBELLSPORT SCHOOL DISTRICT
- FOND DU LAC SCHOOL DISTRICT
- EMPIRE SANITARY DISTRICT #1
- EMPIRE SANITARY DISTRICT #2
- EMPIRE SANITARY DISTRICT #3
- SANITARY SERVICE PLANNING AREA BOUNDARY
- CEMETERIES
- INSTITUTIONAL
- UTILITIES
- RECREATIONAL
- CITY OF FOND DU LAC
- LAKE DE NEVEU
- ROADS
- POTENTIAL BICYCLE ROUTES & PLANNED TRAILS
- POTENTIAL LOCAL TRAIL
- POWERLINES
- BROADCASTING & TELECOMMUNICATIONS
- CEMETERIES
- POTENTIAL FUTURE PARK SITES (1-2 MILE SERVICE RADIUS)
- POTENTIAL WIND TURBINE LOCATION
- ACTIVE/ABANDONED WASTE DISPOSAL SITES

TO TOWN OF FOREST

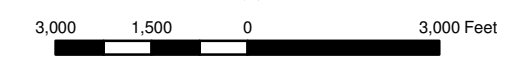
TOWN OF FOREST

7 HILLS RD

TO TOWN OF FOREST

TO TOWN OF EDEN

TO TOWN OF FOND DU LAC



Omni
ASSOCIATES

PROJECT # M1118A03
DATE: 05/12/2005
DRAWN BY: KAL
REVISED: 12/14/06

ONE SYSTEMS DRIVE APPLETON, WI 54914
PHONE: (920) 735-6900 FAX: (920) 830-6100

Location: F:\Municipal\Jobs\M1118 (Empire)\GIS\DRAWINGS\Utilities_11x17.MXD
Source: Fond du Lac County
East Central Wisconsin Regional Planning Commission
Wisconsin DNR